

# 2275 POSADA COURT

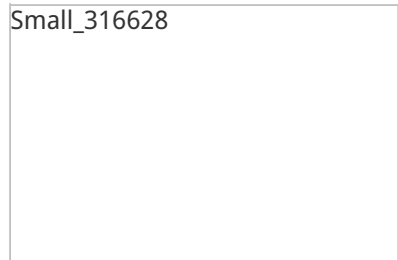
CORONA, CA 92879 | MLS #: TR21003106

**\$469,900** | 4 BEDS | 3 BATHROOMS | 2 CAR GARAGE ATTACHED | 1672 SQUARE FEET



View Online: <http://2275posada.homeis4sale.com>  
For Instant Photos: Text 22750 To 415-877-1411

Small\_316628



**This beautifully updated 4 bedroom, 3 bath modern farmhouse style home located in the Corona Del Rey community of Corona Hills is a must see!! This home includes beautiful wood look laminate flooring throughout, white shutters, neutral paint and many upgrades. The kitchen is bright and inviting with a large pantry, quartz counter tops, beautiful back splash, stainless steel appliances and attached dining area which includes a lovely updated fireplace for cozy evenings or chilly winter days. The master bath has been recently remodeled and includes skylights, quartz counter tops with dual sinks and beautiful updated shower. The maintenance free backyard includes a covered patio with room for an outdoor kitchen and spa. The community amenities include a pool, spa and playground. Close to 91 and 15 freeways, Metrolink train station, shopping, parks and restaurants.**

- Open & Spacious Floor Plan
- Updated Kitchen
- Hardwood Flooring Throughout Plan
- Plantation Shutter throughout
- Remodeled Master Bath
- Maintenance Free Backyard
- Covered Patio
- Community Pool & Spa



## AGENT INFORMATION

### Mike Lewandowski

P: 951-520-8520  
M: 951-544-5196  
License # 01144330  
[mike@statelinefunding.com](mailto:mike@statelinefunding.com)  
[www.statelinerealty.com](http://www.statelinerealty.com)

### Stateline Realty



Disclaimer: All information deemed reliable but not guaranteed.

## ABOUT MIKE LEWANDOWSKI

*Stateline Funding & Realty was established in 1984. We are a professional mortgage and real estate planning firm. We are located in Corona and servicing Southern California. We provide our clients with convenience of all in one service by representing your real estate and mortgage needs. We are a referral based company, and maintain life long relationships with each of our clients.*